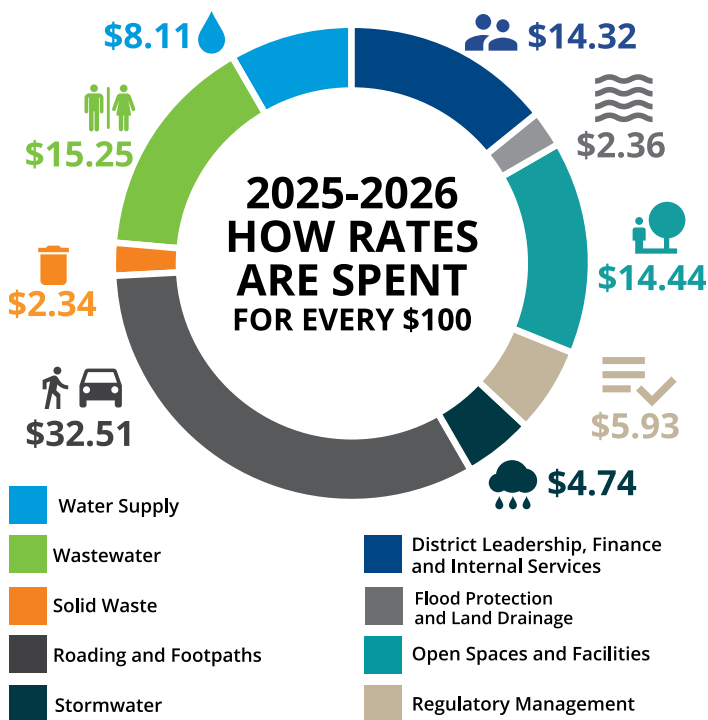


How have my rates changed?

On average, rates have gone up by 8.3% (after growth) for the 2025/2026 year.



This graph shows overall council expenditure. Some of these rates do not apply to all ratepayers, such as water supply.

Your rates are made up of two components.

General rates

General rates are shared throughout the district, depending on the value of your land. A fixed amount known as the Uniform Annual General Charge (UAGC) is also charged to all properties. This pays for general services such as road maintenance.

Targeted rates

These rates are paid depending on where you live or the specific services you receive. Targeted rates may be based on land value or they may be a fixed amount. Examples of targeted rates that are based on land value are land drainage areas, such as Raupō Drainage, or stormwater. These are listed on your rates invoice. When rates are fixed, everyone who pays the targeted rate pays the same amount. Some examples are the Dargaville or Ruawai CCTV rate, Mangawhai Harbour restoration rate, and rates for wastewater services.

This year a new targeted rate will be collected to support three of the district's museums. The targeted rate equates to \$14 for each rateable property in the district per year, and is distributed evenly between the Dargaville, Kauri and Mangawhai museums.

What affects the rates that I pay?

Council work programme

Many services we provide are paid for by rates. The volume of work, and the cost of it, affects the total amount we collect. Most of the work we do is necessary to keep services, such as roads, water and wastewater systems, working. Generally, this work cannot be deferred. A small part of our budget, such as the grants we provide or the parks we manage, are important to help our communities thrive. When setting rates, elected members carefully balance the benefit of the service against the cost to ratepayers.

External funding

To minimise the cost to ratepayers, we look for alternative funding sources, such as government grants, wherever possible. Projects like Pouto Wharf, Pahi toilets, the new floodgate at Canal G in Te Kowhai, stormwater improvements for Robert Street in Mangawhai and cleaning the Awakino River mouth are all supported by central government funding. The emergency road repairs we are completing this year as a result of extreme weather events will be supported by a higher NZ Transport Agency subsidy.



Photo: Pouto Wharf

Northland Regional Council rates

Your invoice includes rates for Northland Regional Council (NRC). These are collected by KDC on behalf of NRC. Find out more at nrc.govt.nz.

How to pay your rates

The easiest way to make regular rates payments is by direct debit. You can make your payments weekly, fortnightly, monthly, quarterly or annually. We can help you set the direct debit up and do all the administration for you. There's no need for you to adjust your payments when rates change, we'll give you plenty of notice and adjust your payments annually.

You can also pay using:



Bill payment



Credit card online or



Eftpos at our office.

You can contact our friendly team by phone 0800 727 059, email revenue@kaipara.govt.nz if you need a hand, or go to kaipara.govt.nz/rates

Rates rebates changes

With recent updates to the Rates Rebate Scheme this means that even if you weren't eligible last year, you may now qualify under the revised criteria. With changes to the thresholds and the rebate amount being increased, the key changes are:

- The maximum rebate has increased from \$790 to \$805
- The income threshold is now \$31,510 and for SuperGold Card holders \$45,000

Due to expected processing delays, we recommend paying your first instalment by 20 August 2025. If you received a rebate in 2024/25, your new application form will be included with your July rates invoice.

SuperGold Card holders

If applying in person, please bring your card and for applications by mail or email, include a copy of the name and signature side of your card for verification.

Have your say

In August we are planning to ask for your feedback on moving from land value (LV) to capital value (CV) for general rates. Land value (LV) is the value of your land, while capital value (CV) includes the land value plus any improvements made to the land, such as buildings.

Any change, should it be agreed following community consultation, will not take effect until the next financial year 2026/2027. It does not increase the overall rates take for Council and only redistributes costs. Look out for consultation opening on our website.

Local Elections 2025

Candidate nominations are now open for the 2025 local elections.

Kaipara District Council includes one mayor and eight councillors elected from the three wards: Wairoa (3 seats), Otamatea (2 seats), and Kaiwaka-Mangawhai (3 seats).

To throw your hat in the ring, you must be a New Zealand citizen, 18 or older, enrolled on the parliamentary roll and nominated by two locals from the ward you're aiming to represent.

Nominations are open until 1 August find out more at kaipara.govt.nz/elections



Antenno
Be Informed. Get Involved.



Stay connected to your community – get the latest council notices and information from Antenno, it's free! Install today from the App Store or Google Play.